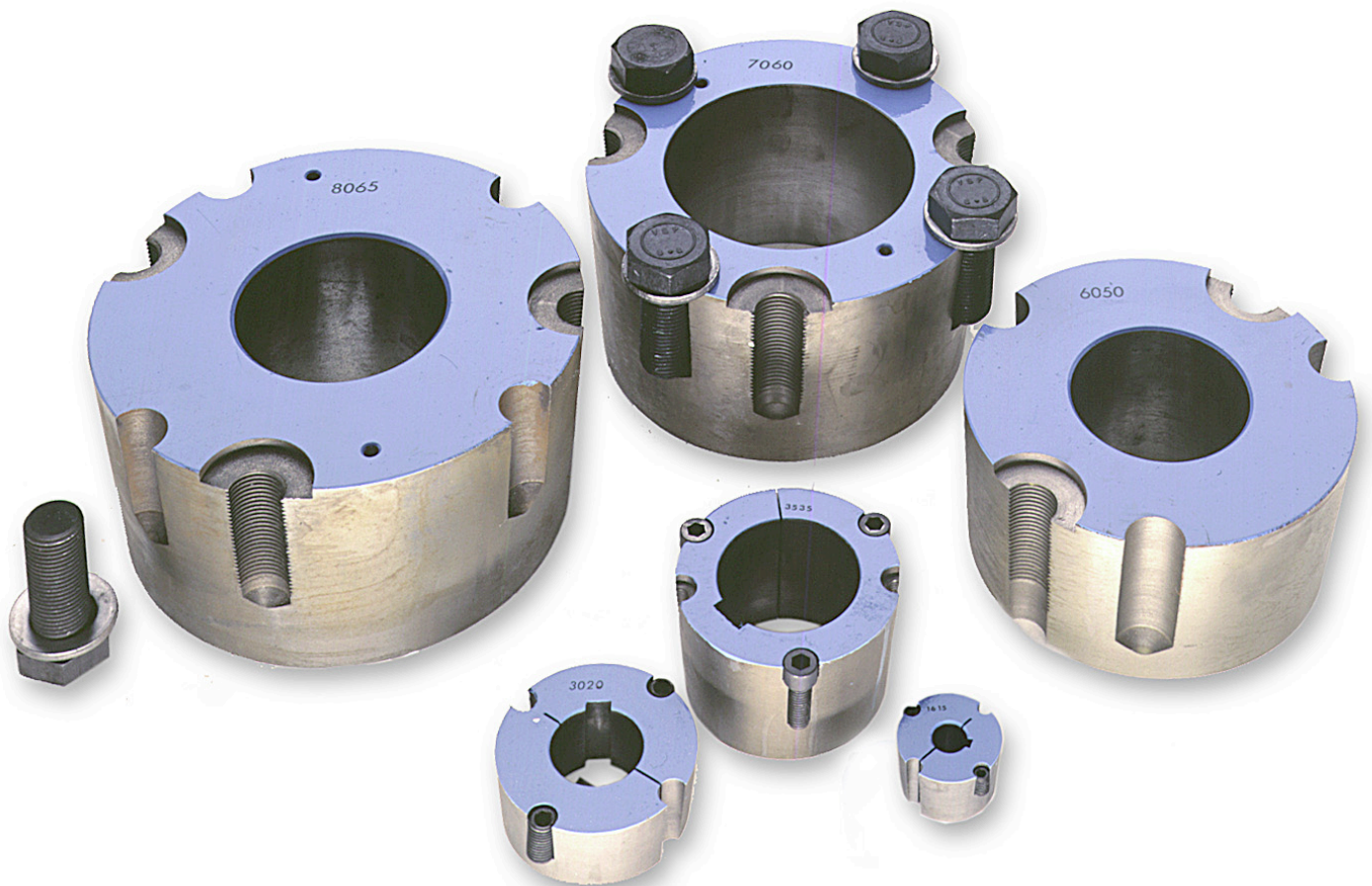




ANTRIEBSELEMENTE

TaperLock bushes



If performance is required

www.luetgert-antriebe.de

TAPERLOCK BUSHES

ASSEMBLY FACILITATION

TaperLock bushes have taken root as simple shaft-hub connection for standard and series drives. We provide the full range of drive elements both standard and custom-made.

The elements are available ex stock in standard sizes 1008 to 5050, and in special sizes 6050 to 10085 in all bore diameters. The grooves are manufactured according to DIN 6885/DIN 6886. Versions with inch bores, metric threads or in alternative materials are also available at short notice.

Benefit from our huge range, our extensive storage warehouse, short-term availability and fast production possibilities for custom-made products.

Materials

- Standard material: Cast iron EN-GJL-200 bis EN-GJL-300 (GG-20 to GG-30) according to DIN EN 1561
- Alternative materials (EN-GJS, steel, aluminum, plastic, etc.) possible



Bore table

Size	Finish bore Ø														Bush length [mm]					
	[mm]																			
1008	10	11	12	14	16	18	19	20	22	24*	25*				23					
1108	10	11	12	14	16	18	19	20	22	24	25	28*				23				
1210	10	11	12	14	16	18	19	20	22	24	25	28	30	32	26					
1610	14	16	18	19	20	22	24	25	28	30	32	35	38	40	42*	26				
1615	14	16	18	19	20	22	24	25	28	30	32	35	38	40	42*	39				
2012	14	16	18	19	20	22	24	25	28	30	32	35	38	40	42	45	48	50	33	
2517	16	18	19	20	22	24	25	28	30	32	35	38	40	42	45	48	50	55	60	46
3020	25	28	30	32	35	38	40	42	45	48	50	55	60	65	70	75				52
3030	35	38	40	42	45	48	50	55	60	65	70	75					76			
3535	35	38	40	42	45	48	50	55	60	65	70	75	80	85	90				89	
4040	40	42	45	48	50	55	60	65	70	75	80	85	90	95	100				102	
4545	55	60	65	70	75	80	85	90	95	100	105	110					114			
5050	70	75	80	85	90	95	100	105	110	115	120	125					127			
6050 **	100	105	110	115	120	125	130	135	140	145	150					127				
7060 **	110	115	120	125	130	135	140	145	150	155	165	170				153				
8065 **	110	115	120	125	130	135	140	145	150	155	165	170	175	180	185	190	195	200	165	
10085 **	150	155	165	170	175	180	185	190	195	200	215	220	225	230	235	240	245	250	216	

* With flat groove
** Special design with metric thread

Groove table

Ø Bore	from	10	12	17	22	30	38	45	51	59	66	76	86	96	110	24*	25*	28*	42*
	to	12	17	22	30	38	44	50	58	65	75	85	95	110	130				
Groove width [mm]		4	5	6	8	10	12	14	16	18	20	22	25	28	32	8		12	
Groove depth [mm]		D +1,8	D +2,3	D +2,8	D +3,3	D +3,3	D +3,3	D +3,8	D +4,3	D +4,4	D +4,9	D +5,4	D +5,4	D +6,4	D +7,4	D +1,3		D +2,2	

PRODUCT OVERVIEW

EXTRACT

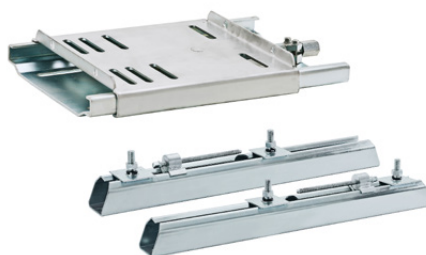
Drive pulleys

V-belt pulleys | V-belt pulleys | Flywheels | Grid pulleys | Timing belt pulleys | Rubberized Pulleys | Split pulleys | Aluminium pulley



Supplies for drive belts

TaperLock clamping bushes | Motor mounting systems | V-belts / Drive belts | V-belt metrology | Rubber suspensio units
Ocillating mountings | Tensioner devices | Foundation blocks | Shafts and rolls



More information required?

www.luetgert-antriebe.de

